

iS2420-2S-S2

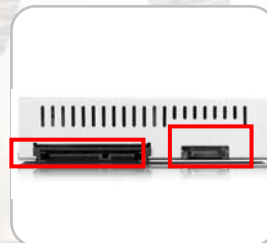
Small but yet Big Capacity



Coming with aluminum handle and size of a 3.5" hard drive form factor, iS2420 utilizes the limited space inside the computer case or works under large vibration of operating environment. The advantage of storage distribution can help to enhance the performance of system operation and the mini size provides the best solution for limited space of computer case.



Aluminum Handle

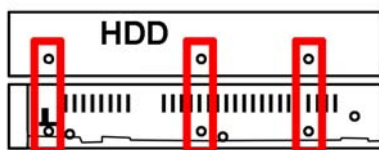


Left: SATA 7+15 Pin

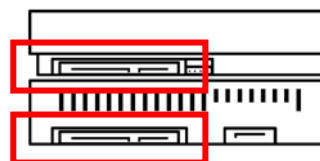
Right: SATA 7 Pin

- The Screw Hole Positions & Dimensions are Consistent with 3.5" HDD**

Having the same screw hole positions and dimensions as a 3.5-inch HDD allows iS2420 to be installed in any 3.5-inch HDD slot in the PC, even a floppy slot.



Screw Hole

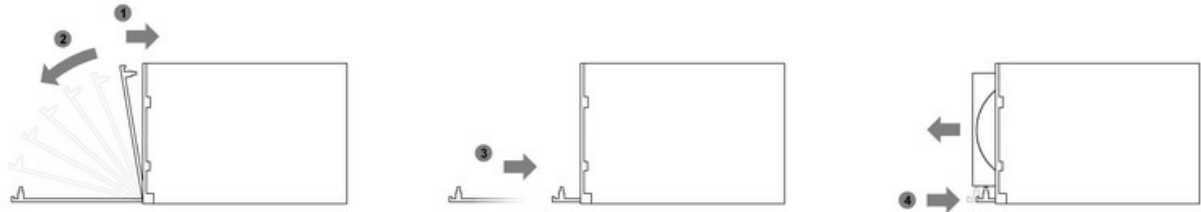


SATA Connector



- **Easy Ejection Design**

A slight press to eject the HDD./ SSD and no screws or tray modules for installing hard drives make HDD / SSD replacement become easier.



Model No.	iS2420-2S-S2
Host Interface	SATA Port x 2
Transfer Rate	300MB/s
RAID Level	JBOD (individual drives volume)
Support Hard Drive	2x2.5-inch SATA HDD / SSD
Support Single HDD Maximum Capacity	500G
LED Indicators	Yes
Power Supply	SATA 15 Pin (DC 5V & 12V)
Electricity Consuming	2W
Operating System	Windows XP / Vista / MAC OS / Linux / Windows 7
Certifications	CE
Package Content	Quick Installation Guide / Accessory Kit

The product specification is subject to change without notice.

Logistical Data

Dimension of Article:	102W*147L *26H mm	Net Weight:	
Dimension of Packing Box:	135W*200L*55H mm	Gross Weight (incl. packing):	
Dimension/Carton:	416W*568L*244H mm	Total Weight:	
Packing Unit:	32units/ctn	Country of Origin:	Taiwan
EAN-No.:	Black:4711132862317/ Silver:4711132862324		
UPC-No.:	Black:884826502739/ Silver: 884826502746		